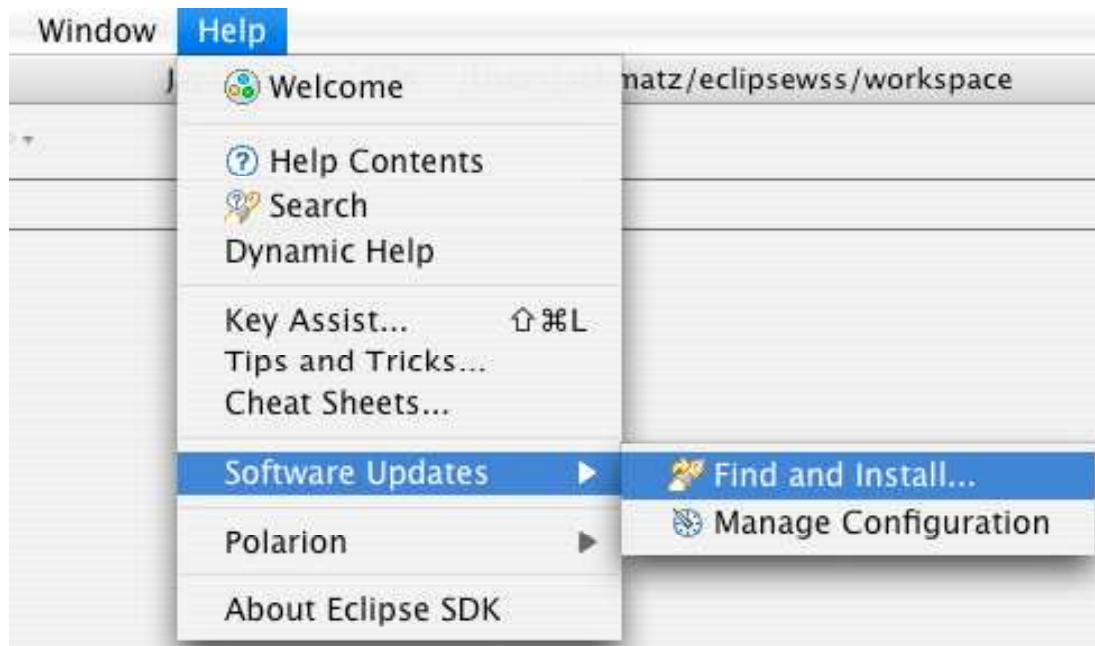


Installation des „Subversive“ Plugins

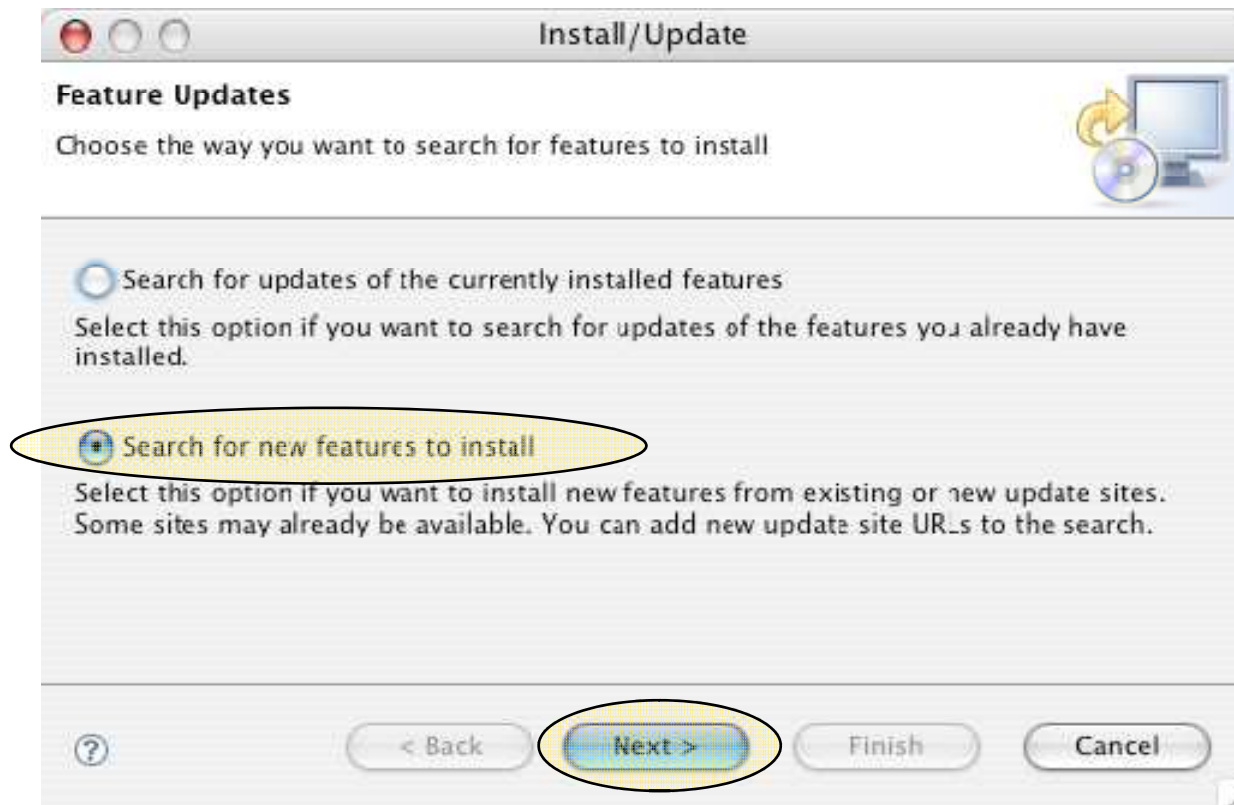
Subversive installieren

- **Nutze das Help Menü von Eclipse**
 - ◆ **Help → Software Updates → Find and Install...**



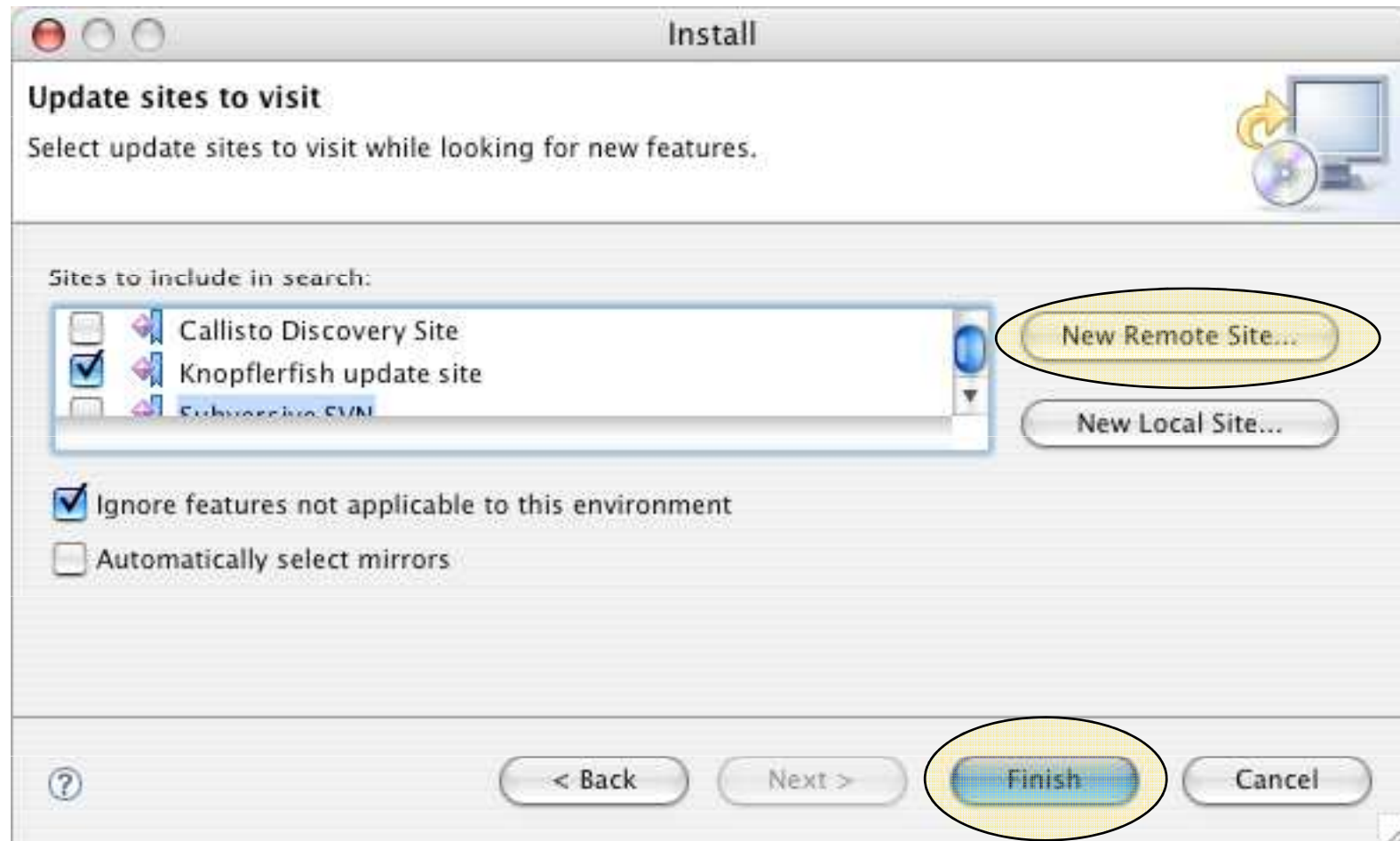
Subversive installieren

- **Search for new features to install** → **Next**



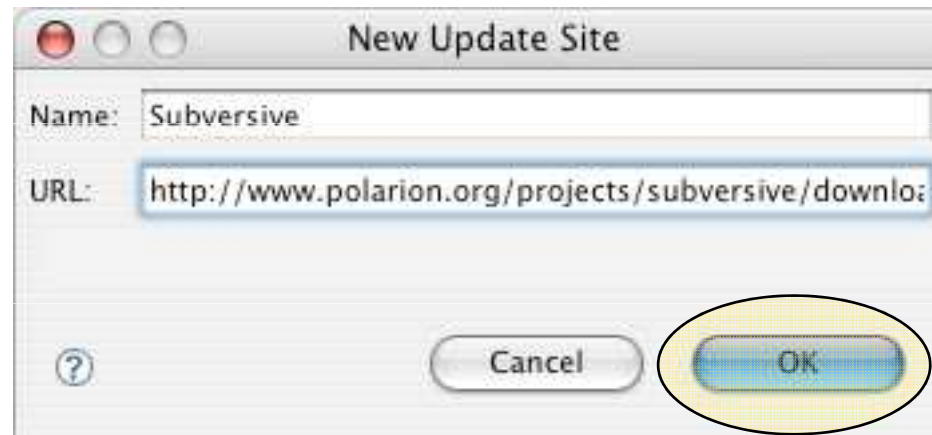
Subversive installieren

- **New Remote Site** → **Finish**



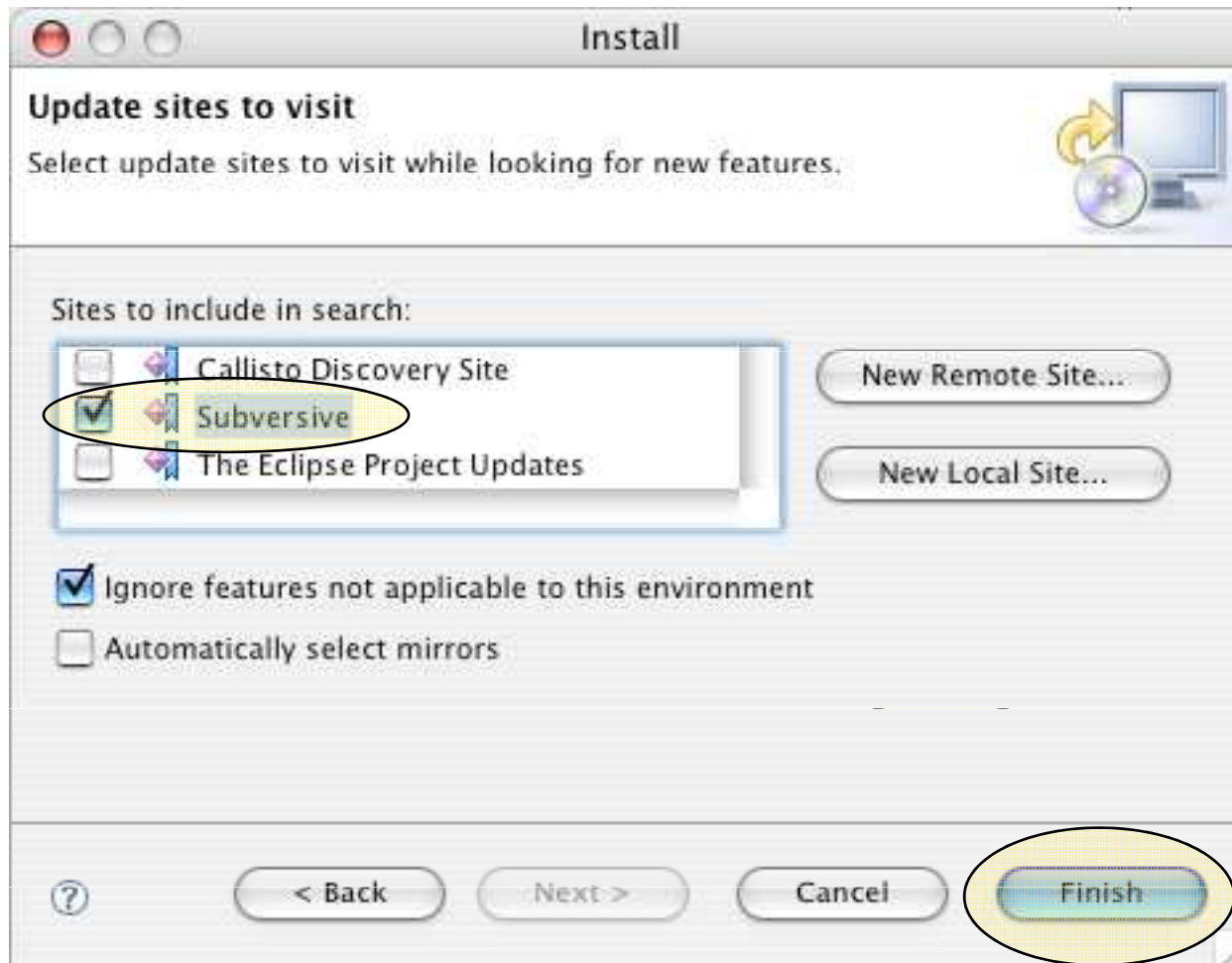
Subversive installieren

- **Name:**
z.B.: Subversive
- **URL:**
<http://www.polarion.org/projects/subversive/download/1.1/update-site/>

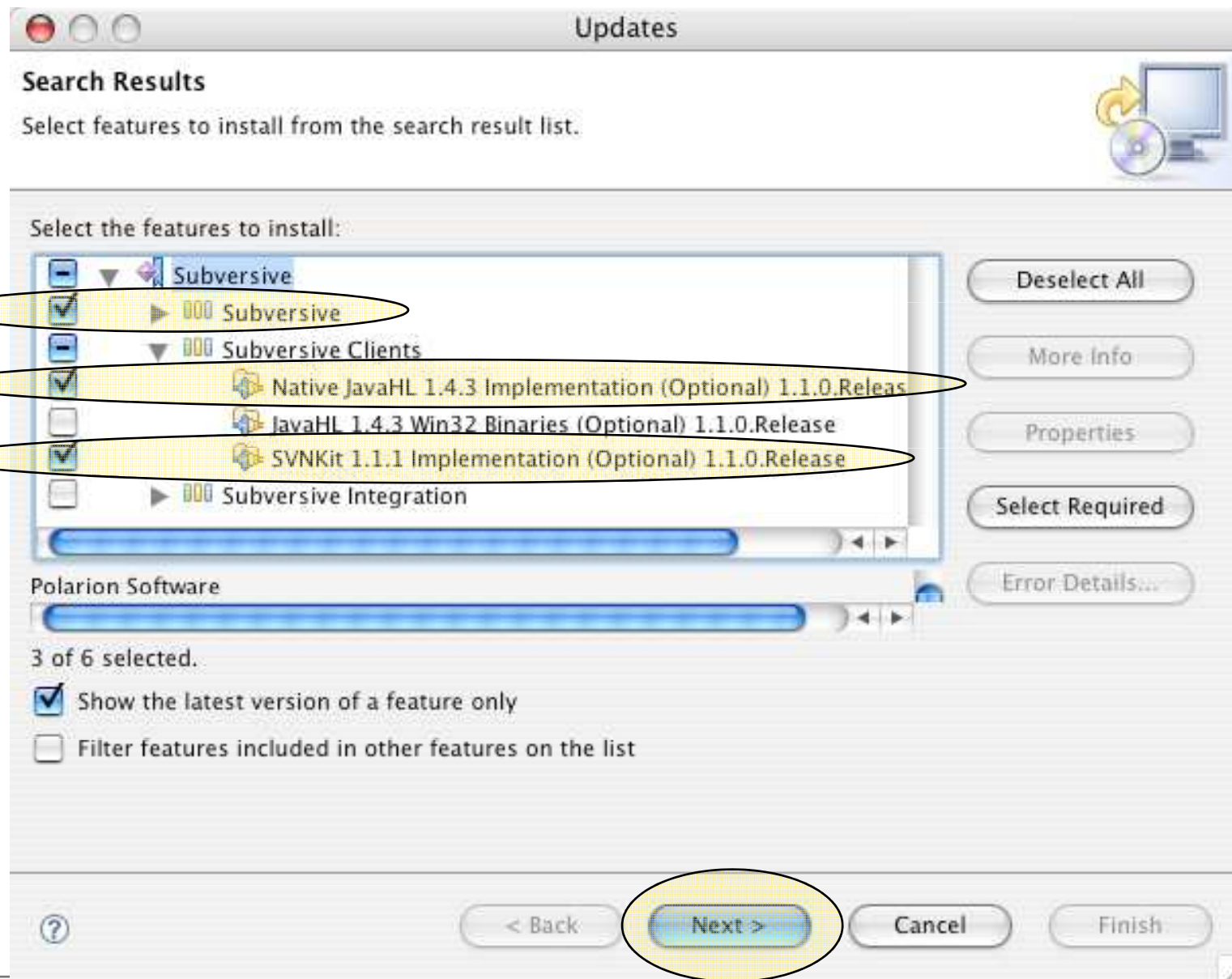


Subversive installieren

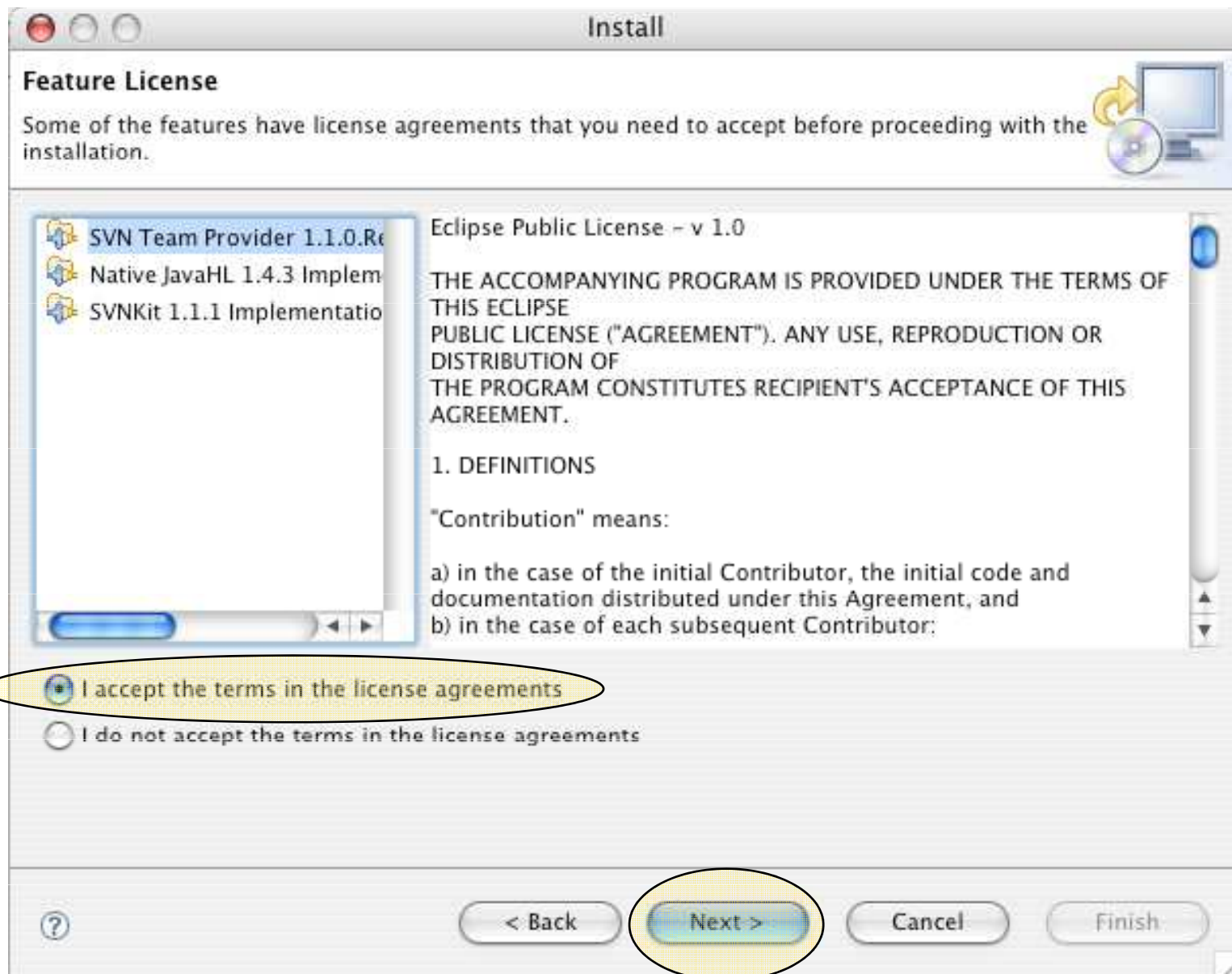
- **Select Subversive Site → Finish**



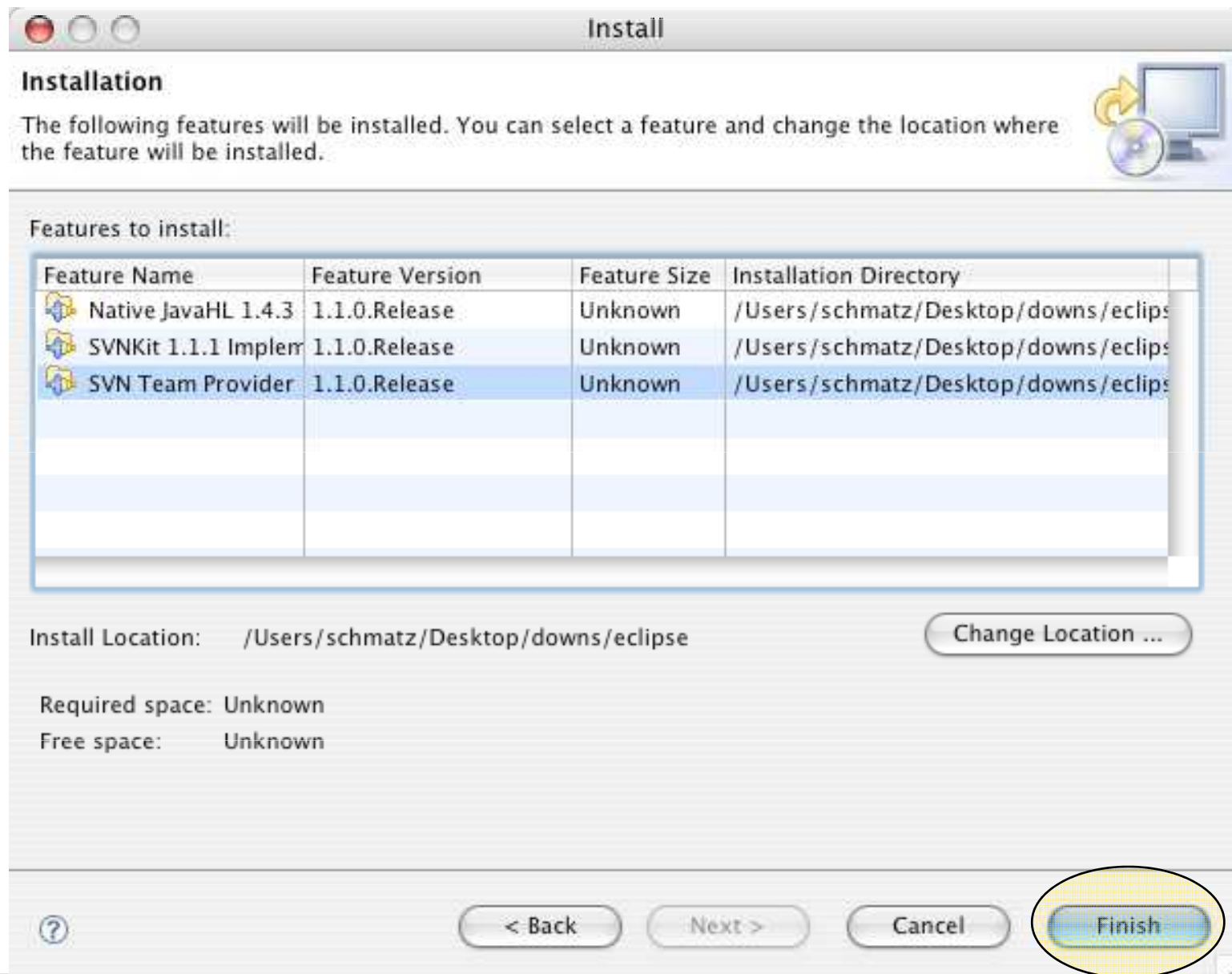
Subversive installieren



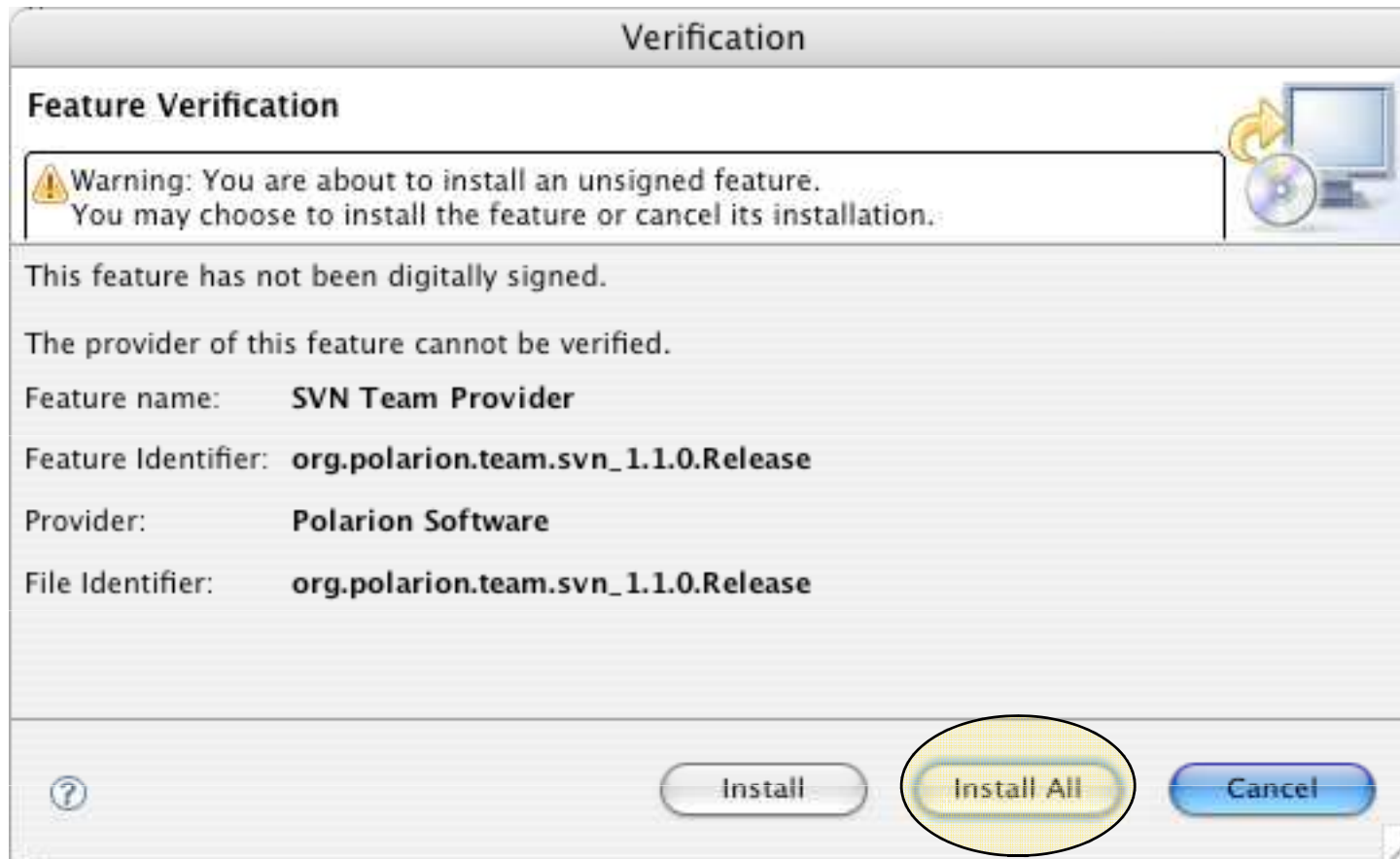
Subversive installieren



Subversive installieren



Subversive installieren



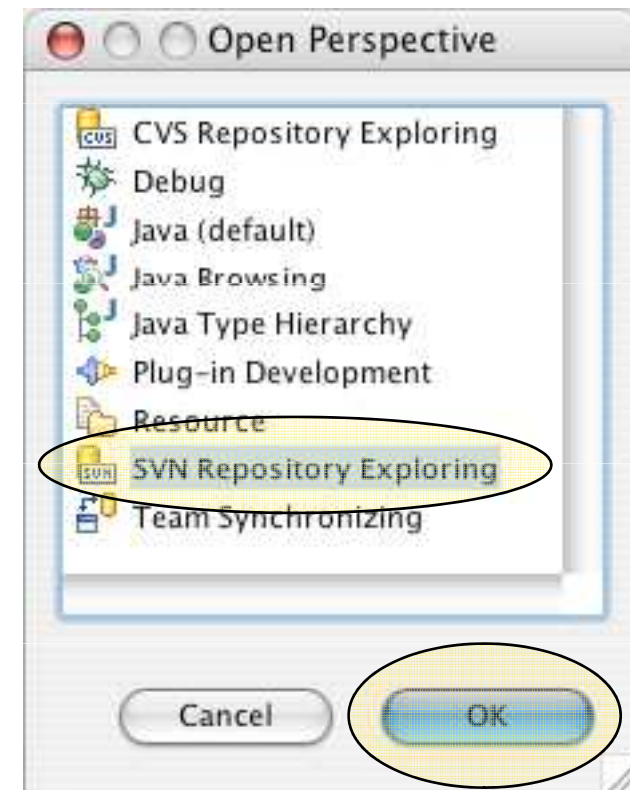
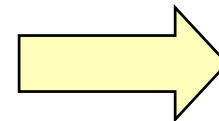
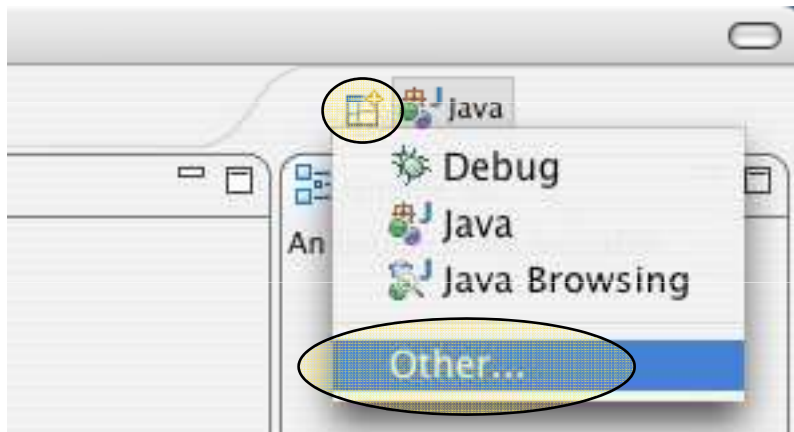
Subversive installieren

- **Eclipse neu starten**



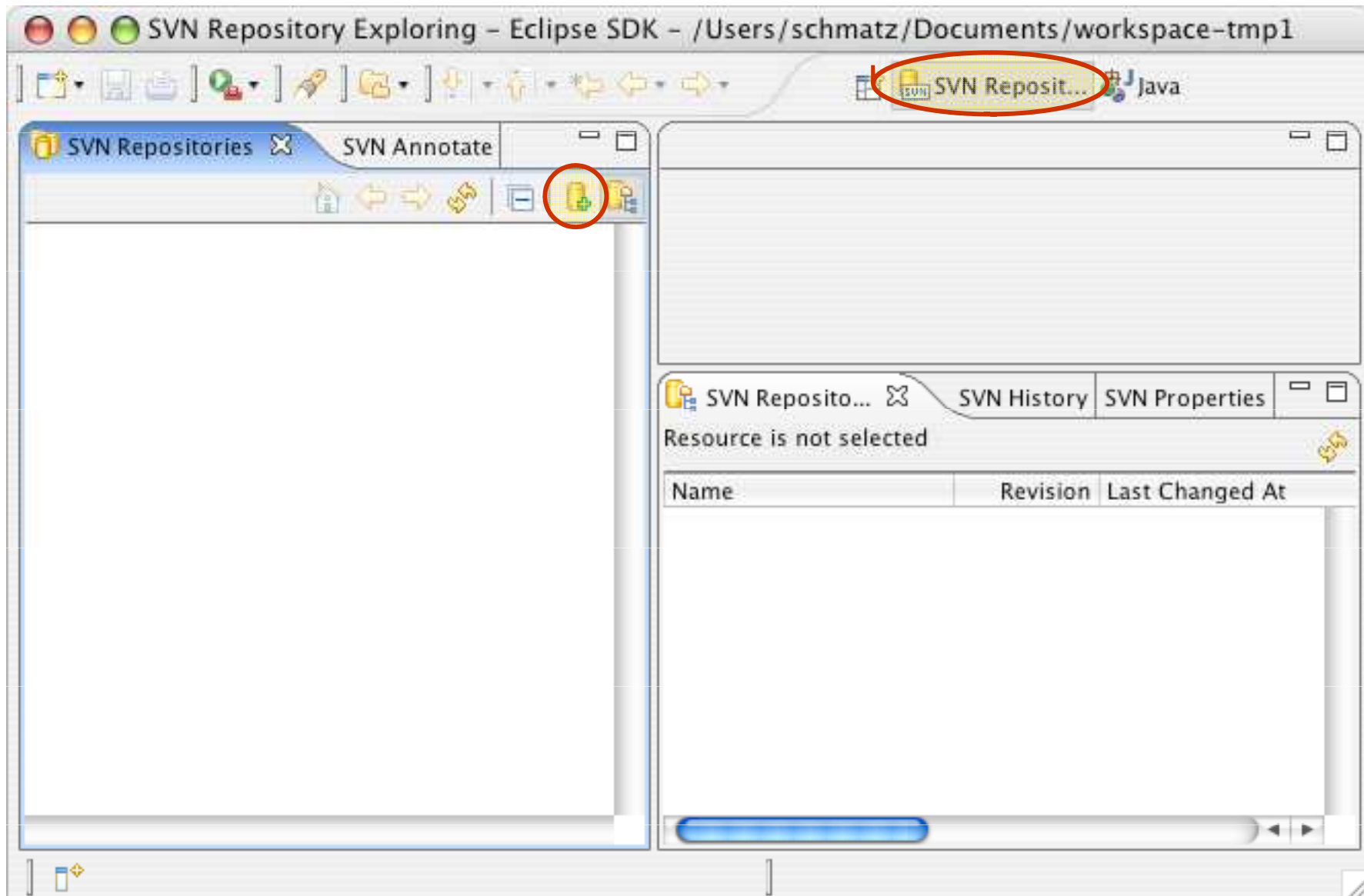
Subversive installieren

- **SVN Perspektive hinzufügen**



**Verbinden mit dem „Subversion“
Repository
via „Subversive“**

1. „SVN Repository Exploring“ Perspektive auswählen



Repository Information eingeben

New Repository Location

Enter Repository Location Information

Define the SVN repository location information. You can specify additional settings for proxy and svn+ssh, https connections.

SVN

General Advanced SSH Settings SSH Settings Proxy

URL: `https://svn.lai.uni-bonn.de/repos/lai_Software/prv/markschmatz` Browse

Label

Use the repository URL as the label

Use a custom label:

Authentication

User: `mark.schmatz`

Password: `*****`

Save password

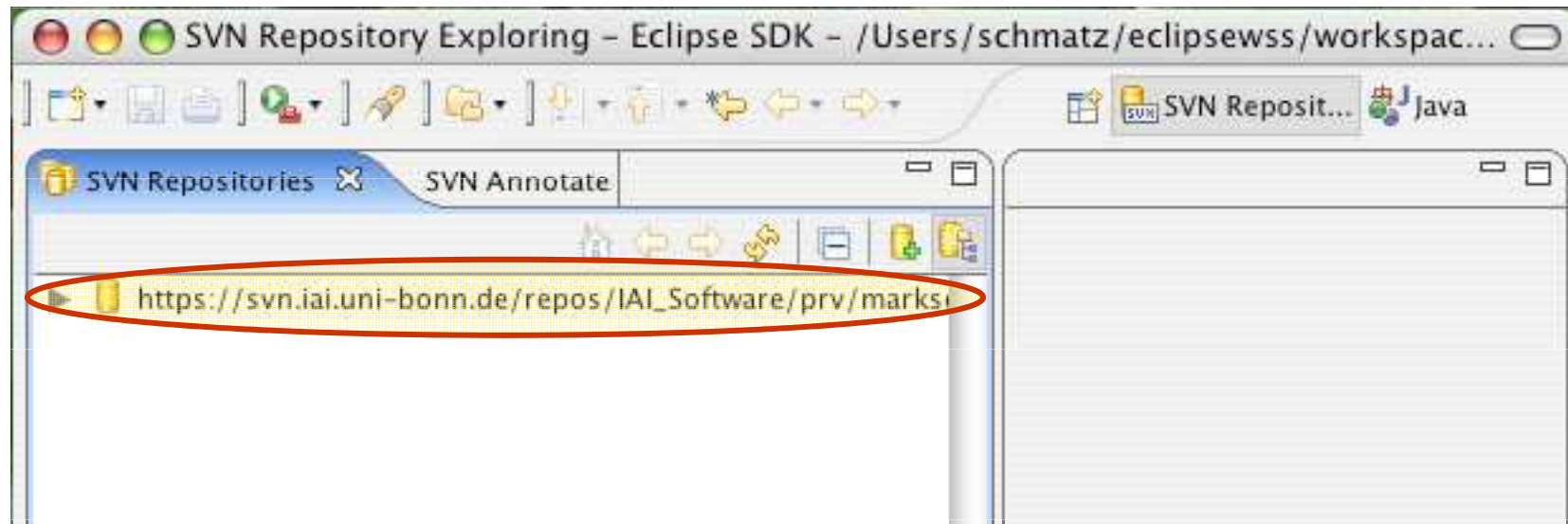
Show Credentials For: `<Repository Location>`

Validate Repository Location on finish

Reset Changes

Cancel Finish

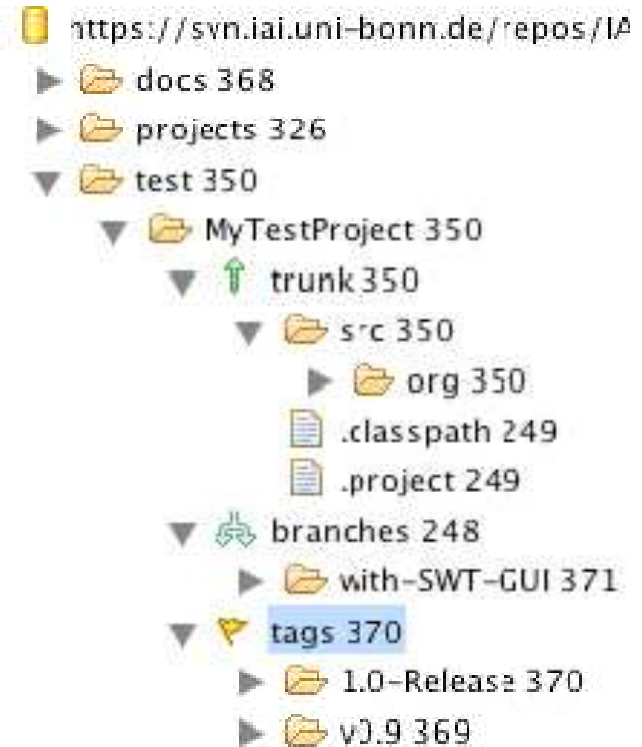
Ergebnis



Repository Layout (1/2)

SVN organisiert Projekte in drei speziellen Verzeichnissen:

- trunk
 - ◆ Enthält die aktuelle Entwicklungslinie (wie HEAD in CVS)
 - ◆ Also den trunk „auschecken“!
- tags
 - ◆ Enthält unveränderliche Versionen des Projekts
 - Für Releases, Milestones, Backups
- branches (hier nicht relevant)
 - ◆ Enthält branches (Zweige) des Projekts
 - Für Untergruppen eines Teams, oder parallele Entwicklung einer Variante.



Repository Layout (2/2)

- **Konvention**
 - ◆ **trunk, branches, tags sind normale Ordner im Projektordner**
 - ◆ **SVN behandelt sie nur besonders aufgrund ihres Namens**
- **Man kann die Ordner des Projekts organisieren wie man möchte!**

